

**Working Pressure:
600 psi (40 bar) for all sizes¹.**

- Housing - 316 stainless steel, Grade CF8M (UNS # J92900) conform to ASTM A351/A351M.

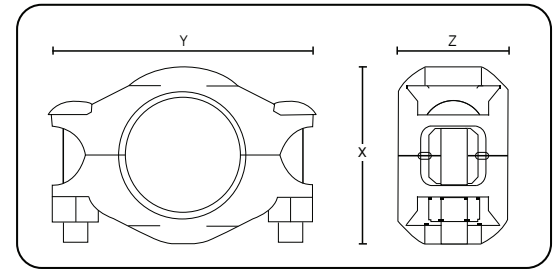
- Gaskets - EPDM rubber, suitable for hot and cold water services. Two shapes of gaskets are available: C-shaped or Flush-fit. NSF/ANSI 61 approved or equivalent for drinking water system components. *Not suitable for petroleum service.*

- Bolts / nuts - Round-head, square-neck, 316 stainless steel bolts and heavy hex nuts conform to ASME B18.5 and B18.2, respectively.

Note

For the use of Style B couplings on cyclic axial displacement systems, please consult with Piedmont for design and installation guidance.

¹ Working pressures have been determined based on generally accepted standard specifications for performance of gasketed mechanical couplings, in accordance with ASTM F1476 and are applicable for schedule 40s pipes with cut grooves only. For use on pipes thinner than schedule 40s and for roll grooves, please consult with Piedmont. Pipe's schedule, working pressure and material must comply with the requirements of ASME B31.1.



Style B Specifications					
Nominal size inch	Dimensions inch (mm)			Approx. Weight lb (kg)	Working pressure* psi (bar)
	X	Y	Z		
3/4	1.91 (48.5)	3.04 (77.2)	1.68 (42.7)	0.81 (0.37)	600 (40)
1	2.29 (58.2)	3.42 (86.8)	1.68 (42.7)	0.95 (0.43)	600 (40)
1-1/4	2.50 (63.5)	3.65 (92.7)	1.71 (43.4)	1.09 (0.49)	600 (40)
1-1/2	2.76 (70.1)	4.06 (103.1)	1.71 (43.4)	1.18 (0.54)	600 (40)
2	3.24 (82.3)	4.38 (111.3)	1.85 (47.0)	1.38 (0.63)	600 (40)
2-1/2	3.74 (95.0)	5.30 (134.6)	1.85 (47.0)	2.05 (0.93)	600 (40)
3	4.36 (110.7)	5.88 (149.3)	1.85 (47.0)	2.40 (1.09)	600 (40)
4	5.70 (144.8)	7.60 (193.0)	2.02 (51.3)	4.23 (1.92)	600 (40)
6	8.18 (207.8)	10.25 (260.4)	2.02 (51.3)	9.12 (4.14)	600 (40)

