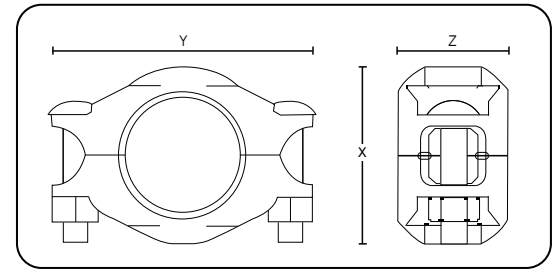


Working Pressure:

| Nominal size | Working Pressure ¹ |
|--------------|-------------------------------|
| 3/4" – 8" | 1200 psi (82 bar) |
| 10" – 12" | 1200 psi (82 bar) |



- Housing - Duplex or Superduplex stainless steel type CE8MN (UNS # J93345) conform to ASTM A995, Grade 2A requirements. Piedmont also offers this coupling in superduplex type CE3MN (UNS # J93404) conform to ASTM A995, Grade 5A requirements for higher resistance to corrosion. Other alloys are also available; contact Piedmont for details.

- Gaskets - EPDM rubber, suitable for hot and cold water services. Two shapes of gaskets are available: C-shaped or Flush-fit. NSF/ANSI 61 approved or equivalent for drinking water system components. *Not suitable for petroleum service.*

- Bolts / nuts / washers - Round-head, square-neck, 316 stainless steel bolts conform to ASME B18.5. Heavy hex silicon bronze nuts (type 651) for sizes from 3/4" to 3", 316 stainless steel nuts for 4" and above. Washers are heavy pattern 316 stainless steel.

NOTE

For the use of Style D couplings on cyclic axial displacement systems, please consult with Piedmont for design and installation guidance.

¹ Working pressures have been determined based on generally accepted standard specifications for performance of gasketed mechanical couplings, in accordance with ASTM F1476 and are applicable for schedule 40s pipes with cut grooves only. For use on pipes thinner than schedule 40s and for roll grooves, please consult with Piedmont. Pipe's schedule, working pressure and material must comply with the requirements of ASME B31.1.



| Style D Specifications | | | | | |
|------------------------|----------------------|---------------|-------------|------------------------|-----------------------------|
| Nominal size inch | Dimensions inch (mm) | | | Approx. weight lb (kg) | Working pressure* psi (bar) |
| | X | Y | Z | | |
| 3/4 | 1.91 (48.5) | 3.04 (77.2) | 1.68 (42.7) | 0.81 (0.37) | 1200 (82) |
| 1 | 2.29 (58.2) | 3.42 (86.9) | 1.68 (42.7) | 0.97 (0.44) | 1200 (82) |
| 1-1/4 | 2.50 (63.5) | 3.65 (92.7) | 1.71 (43.4) | 1.08 (0.49) | 1200 (82) |
| 1-1/2 | 2.76 (70.1) | 4.06 (103.1) | 1.71 (43.4) | 1.21 (0.55) | 1200 (82) |
| 2 | 3.24 (82.3) | 4.38 (111.3) | 1.85 (47.0) | 1.92 (0.87) | 1200 (82) |
| 2-1/2 | 3.74 (95.0) | 5.30 (134.6) | 1.85 (47.0) | 2.14 (0.97) | 1200 (82) |
| 3 | 4.48 (113.8) | 6.08 (154.4) | 1.85 (47.0) | 2.64 (1.20) | 1200 (82) |
| 4 | 5.70 (144.8) | 7.60 (193.0) | 2.02 (51.3) | 4.54 (2.06) | 1200 (82) |
| 5 | 7.22 (183.4) | 9.50 (241.5) | 2.02 (51.3) | 9.30 (4.23) | 1200 (82) |
| 6 | 8.18 (207.8) | 10.25 (260.4) | 2.02 (51.3) | 9.74 (4.42) | 1200 (82) |
| 8 | 10.89 (276.6) | 13.44 (341.5) | 2.34 (60.7) | 24.50 (11.10) | 1200 (82) |
| 10 | 13.28 (337.3) | 15.88 (403.3) | 2.55 (64.8) | 33.46 (15.18) | 1200 (82) |
| 12 | 15.28 (388.1) | 17.38 (441.4) | 2.55 (64.8) | 34.82 (15.80) | 1200 (82) |

*Style D couplings are also available in nominal sizes of 14" and 16". Contact Piedmont for details.