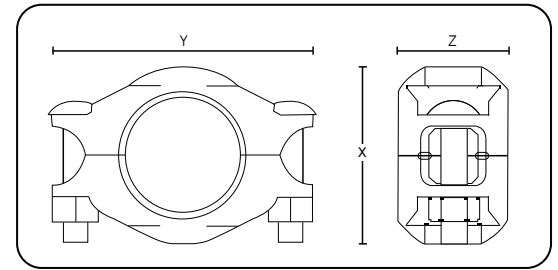


Working Pressure:

Nominal size	Working Pressure ¹
3/4" – 4"	600 psi (41 bar)
6"	400 psi (28 bar)



- **Housing** - Duplex or Superduplex stainless steel type CE8MN (UNS # J93345) conform to ASTM A995, Grade 2A requirements. Piedmont also offers this coupling in superduplex type CE3MN (UNS # J93345) conform to ASTM A995, Grade 5A requirements for higher resistance to corrosion. Other alloys are also available, contact Piedmont for details.

- **Gaskets** - EPDM rubber, suitable for hot and cold water services. Two shapes of gaskets available: C-shaped or Flush-fit. NSF/ANSI 61 approved or equivalent for drinking water system components. *Not suitable for petroleum service.*

- **Bolts / nuts** - Round-head, square-neck, 316 stainless steel bolts and heavy hex nuts conform to ASME B18.5 and B18.2, respectively.

NOTE

For the use of Style F couplings on cyclic axial displacement systems, please consult with Piedmont for design and installation guidance.

¹Working pressures have been determined based on generally accepted standard specifications for performance of gasketed mechanical couplings, in accordance with ASTM F1476 and are applicable for schedule 40s pipes with cut grooves only. For use on pipes thinner than schedule 40s and for roll grooves, please consult with Piedmont. Pipe's schedule, working pressure and material must comply with the requirements of ASME B31.1.



Style F Specifications					
Nominal size (inch)	Dimensions (mm)			Approx. weight (kg)	Working pressure* (bar)
	X	Y	Z		
3/4	1.82 (46.2)	2.90 (73.7)	1.68 (42.7)	0.63 (0.28)	600 (41)
1	2.18 (55.4)	3.50 (89.0)	1.70 (43.2)	0.72 (0.33)	600 (41)
1-1/4	2.42 (61.5)	3.60 (91.4)	1.70 (43.2)	0.77 (0.35)	600 (41)
1-1/2	2.66 (67.6)	3.79 (96.3)	1.70 (43.2)	0.79 (0.36)	600 (41)
2	3.14 (79.8)	4.13 (104.9)	1.70 (43.2)	0.85 (0.39)	600 (41)
2-1/2	3.69 (93.7)	5.00 (127.0)	1.70 (43.2)	1.40 (0.64)	600 (41)
3	4.36 (110.7)	5.70 (144.8)	1.85 (47.0)	1.83 (0.83)	600 (41)
4	5.70 (144.8)	7.50 (190.5)	1.85 (47.0)	3.25 (1.47)	600 (41)
6	7.80 (198.1)	9.75 (247.7)	1.90 (48.3)	5.11 (2.32)	400 (28)

*Style F couplings are also available in the nominal sizes from 8" to 16".