

Pressure Rating:

| Pipe ANSI Schedule Number | Groove Type | Working Pressure PSI/bar |
|---------------------------|-------------|--------------------------|
| 80s | Cut | 250/17 |
| 40s | Cut/rolled | 250/17 |
| 10s | Rolled | 250/17 |
| 5s | Rolled | 250/17 |

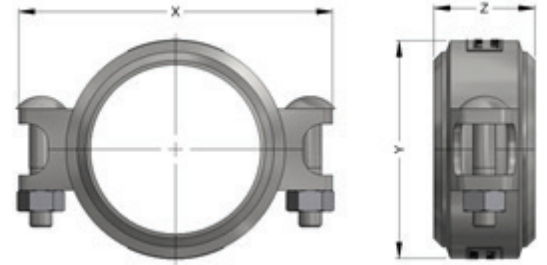
- Housing - 316 stainless steel, Grade CF8M (UNS # J92900) conform to ASTM A351/A351M. Contact Piedmont for other materials.

- Gaskets - EPDM rubber, suitable for hot and cold water services. Two shapes of gaskets, namely C-shaped or Flush-fit are available. NSF/ANSI 61 approved or equivalent for drinking water system components.
Not suitable for petroleum service.

- Bolts / nuts - Round-head, square-neck, 316 stainless steel bolts and heavy hex nuts conform to ASME B18.5 and B18.2 respectively.

NOTE

Working pressure has been determined based on generally accepted standard specifications for performance of gasketed mechanical couplings in accordance with ASTM F1476 standard. Cut grooves are not applicable for Sch. 5s and 10s pipes. Pipe's schedule and material must comply with the requirements of ASME B31.1. JIS 76.1 mm couplings can be offered in different materials and working pressures. Contact Piedmont for system verification and coupling selection for applications involving severe duty axial pumps

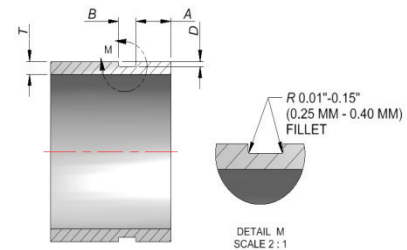


Style J Specifications

| Nominal size* (mm) | Dimensions inch (mm) | | | Approx. weight lb (gm) |
|--------------------|----------------------|-------------|-------------|------------------------|
| | X | Y | Z | |
| 76.1 | 5.25 (133.3) | 3.67 (93.1) | 1.69 (43.0) | 1.25 (567) |

Grooved Pipe Specifications

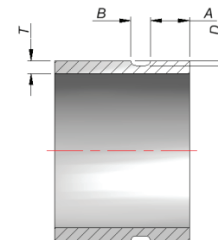
Cut Grooved Pipe



Cut Grooved Pipe Specifications

| A | B | D | Min. T |
|--|--------------------------------------|-------------------------------------|---------------------|
| 0.594"-0.656" (15.08 mm - 16.66 mm) | 0.312"-0.343" (7.92 mm - 8.71 mm) | 0.078"-0.087" (1.98 mm - 2.2 mm) | 0.188" (4.78 mm) |

Roll Grooved Pipe



Roll Grooved Pipe Specifications

| A | B | D | Min. T |
|--|--------------------------------------|--------------------------------------|--------------------|
| 0.595"-0.640" (15.11 mm - 16.26 mm) | 0.329"-0.375" (8.36 mm - 9.53 mm) | 0.078"-0.086" (1.98 mm - 2.18 mm) | 0.83" (2.11 mm) |