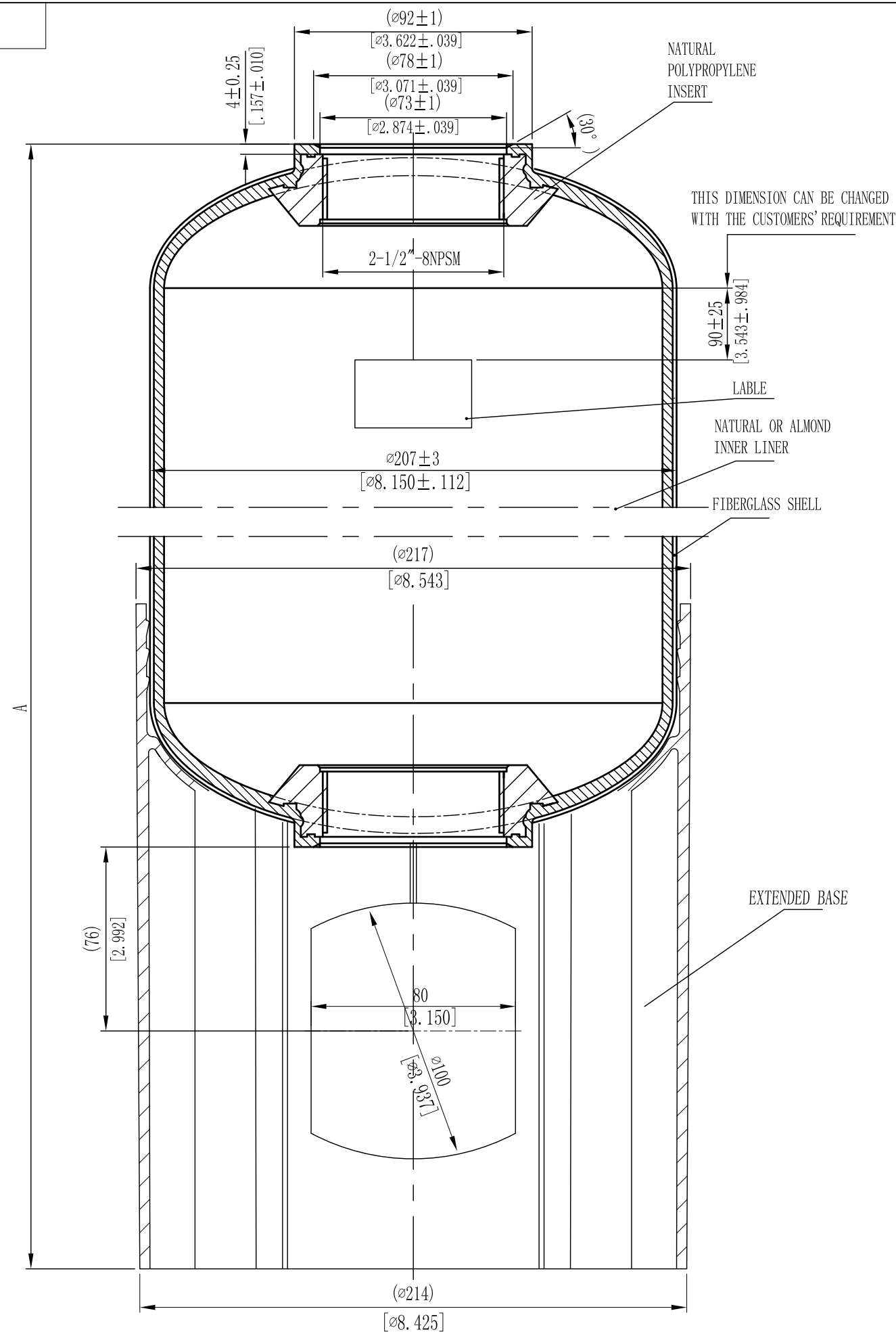


00-88011



MODEL	A		VOLUME			DOME VOLUME			WEIGHT			
	mm	inch	+/-		Liters	U.S. GAL	CUBIC FT	Liters	U.S. GAL	CUBIC FT	Kg	LBS
			mm	inch								
8×13	482	18.98	4	.16	7.7L	2.03	0.27	0.88	0.23	0.03	1.61	3.54
8×17	579	22.80	4	.16	11.0L	2.91	0.39	0.88	0.23	0.03	1.96	4.31
8×35	1045	41.14	5	.20	24.8L	6.55	0.88	0.88	0.23	0.03	4.11	9.04
8×44	1279	50.35	5	.20	32.1L	8.48	1.13	0.88	0.23	0.03	4.76	10.47
8×18	606	23.86	4	.16	11.5L	3.04	0.41	0.88	0.23	0.03	2.36	5.19
8×24	759	29.88	4	.16	16.6L	4.39	0.59	0.88	0.23	0.03	2.84	6.25
8×30	909	35.79	4	.16	21.4L	5.65	0.76	0.88	0.23	0.03	3.57	7.85
8×40	1165	45.87	5	.20	29.1L	7.69	1.03	0.88	0.23	0.03	4.49	9.88

NOTES:

- TANK MUST MEET ALL APPLICABLE SPECIFICATIONS OF NSF/ANSI 044 STANDARD, LATEST REVISION.
- OPERATING SPECIFICATIONS:
 - MAXIMUM WORKING PRESSURE - 150 PSI (10.5BAR)
 - TEMPERATURE RANGE - 34-120° F (1-49°C)
 - MAXIMUM VACUUM - 5"Hg (127mm Hg)
- VISUAL LINER INSPECTION
 - NO MORE THAN 10 INTERNAL OR EXTERNAL BLEMISHES OR BURNT DEBRIS.
 - NO INTERNAL OR EXTERNAL BLEMISHES OR BURNT DEBRIS LARGER THAN 3×3mm.
 - NO INTERNAL BLEMISHES OR BURNT DEBRIS ALLOWED.
- ALL GLASS STRANDS FROM FIBERGLASS LINER TO BE BONDED AND COVERED.
- SURFACE TO BE FREE OF NICKS, SCRATCHES, RESIN AND GLASS.
- DIMENSIONS IN PARENTHESIS ARE REFERENCE ONLY.
- DIMENSIONS IN SQUARE PARENTHESIS ARE INCH UNIT.

1	THIS DRAWING IS UPDATED COMPLYING WITH THE CHINESE VERSION			2009/06/11
VERSION NO.	DESCRIPTION OF CHANGES:			SIGNATURE
REFERENTIAL PLASTIC SHRINKAGE (IF NECESSARY):				
SIGNATURE		WAVE CYBER (SHANGHAI) CO., LTD.		
DESIGN	NAME			
INSPECTION	SCALE		MATERIAL	MODEL
APPROVAL	1 : 2		SMOOTHNESS	DESCRIPTION
THIS PRODUCT DRAWING CAN NOT BE COPIED AND/OR USED WITHOUT PRIOR WRITTEN APPROVAL OF WAVE CYBER.		QUANTITY	COMPUTER CODE	8" (2.5") FRP PRESSURE VESSEL (DOUBLE OPENING)
		PROJECTION	DRAWING NO.	VERSION NO.
		DO NOT MEASURE THE DIMENSIONS.	UNIT: MM	111083-00
				1
				TOTAL PAGE: 1